





USB MIDI DJ Controller with SensPad™ Touch panel



<div style="display: flex; justify-content: space-between; align-items: center;">  <div style="text-align: center;"> CAUTION <small>RISK OF ELECTRIC SHOCK DO NOT OPEN RISQUE DE CHOC ELECTRIQUE NE PAS OUVRIR</small> </div>  </div> <p style="text-align: center; font-size: small;">CAUTION: TO REDUCE THE RISK OF ELECTRIC SHOCK DO NOT REMOVE COVER (OR BACK) NO USER-SERVICEABLE PARTS INSIDE REFER SERVICING TO QUALIFIED PERSONNEL</p> <p style="text-align: center; font-size: x-small;">ATTENTION: POUR EVITER LES RISQUES DE CHOC ELECTRIQUE, NE PAS ENLEVER LE COUVERCLE. AUCUN ENTRETIEN DE PIECES INTERIEURES PAR L'USAGER. CONFIER L'ENTRETIEN AU PERSONNEL QUALIFIE.</p> <p style="text-align: center; font-size: x-small;">AVIS: POUR EVITER LES RISQUES D'INCENDIE OU D'ELECTROCUTION, N'EXPOSEZ PAS CET ARTICLE A LA PLUIE OU A L'HUMIDITE</p>	<div style="display: flex; flex-direction: column; align-items: center;">   </div> <p style="font-size: x-small;">The lightning flash with arrowhead symbol within an equilateral triangle, is intended to alert the user to the presence of uninsulated dangerous voltage within the product's enclosure, that may be of sufficient magnitude to electric shock to persons. Le symbole clair avec point de foudre à l'intérieur d'un triangle équilatéral est utilisé pour alerter l'utilisateur de la présence à l'intérieur du coffret de voltage dangereux non isolé d'ampleur suffisante.</p> <p style="font-size: x-small;">An exclamation point within an equilateral triangle is intended to alert the user of the presence of important operating and maintenance (servicing) instructions in the literature accompanying the appliance. Le point d'exclamation à l'intérieur d'un triangle équilatéral est employé pour alerter les utilisateurs de la présence d'instructions importantes pour le fonctionnement et l'entretien (service) dans le livret d'instruction accompagnant l'appareil.</p>
---	--

Important Safety Instructions

1. Read these instructions.
2. Keep these instructions.
3. Heed all warnings.
4. Follow all instructions.
5. Do not use this apparatus near water.
6. Clean only with dry cloth.
7. Do not block any ventilation openings. Install in accordance with the manufacturer's instructions.
8. Do not install near any heat sources such as radiators, heat registers, stoves, or other apparatus (including amplifiers) that produce heat.
9. Only use attachments/accessories specified by the manufacturer.

Contents

Introduction	1
What's in the package?	1
Features	2
Front Panel Layout	3-4
Side Panel Layout	4
Getting Started	
Connecting your iDJX controller	5
Installing iMap™ Software for MAC OS X	6
Installing iMap™ Software for Windows	6-7
Assigning MIDI functions with iMap™	8
iMap™ iDJX software panel	8-9
Firmware upgrade	10
Restore the factory default settings	10
Deckadance Control Chart	11
Traktor Control Chart	12
Specifications	13
Services	14

Introduction

Thank you for purchasing the ICON iDJX USB MIDI DJ controller. We sincerely trust this product will provide years of satisfactory service, but if anything is not to your complete satisfaction, we will endeavor to make things right.

In these pages, you'll find a detailed description of the features of the iDJX, as well as a guided tour through its front and side panels, step-by-step instructions for its setup and use, and full specifications.

You'll also find a warranty card enclosed---please don't forget to fill it out and mail it so that you can receive online technical support at: www.icon-global.com. And so we can send you updated information about these and other ICON products in the future. As with most electronic devices, we strongly recommend you retain the original packaging. In the unlikely event the product must be returned for servicing, the original packaging (or reasonable equivalent) is required.

With proper care and adequate air circulation, your iDJX will operate without any trouble for many years. We recommend that you record your serial number in the space provided below for future reference.

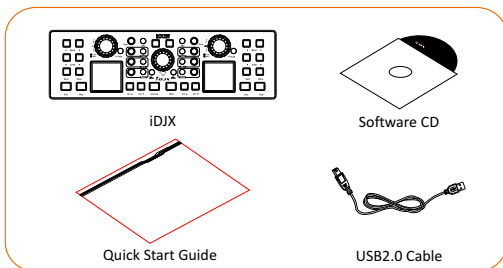
Please write your serial number here for future reference:

Purchased at:

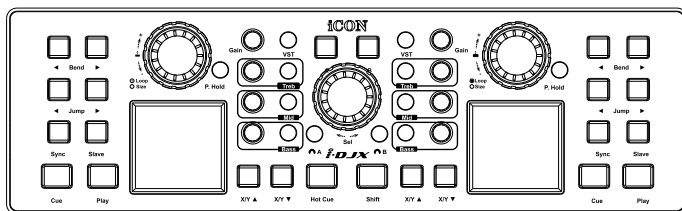
Date of purchase:

What's in the package?

- iDJX USB MIDI controller x 1
- Software CD x 1
- Quick Start Guide
- USB2.0 Cable



Features

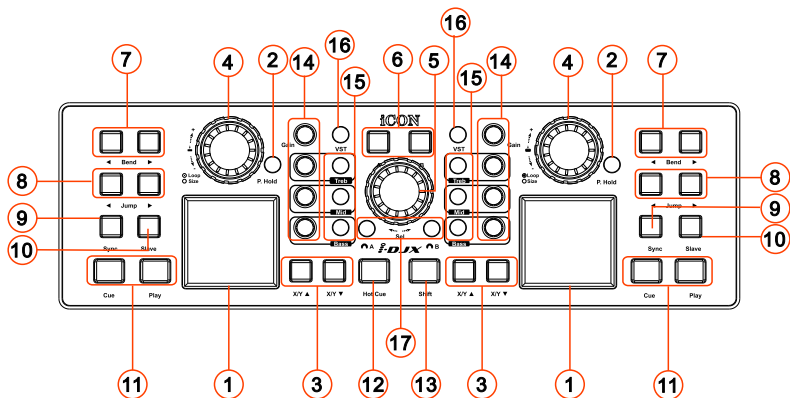


- 2 x high-sensitivity touch screen with backlight.
- Preset templates are included for Deckadance, Traktor and CrossDJ.
- Backlit PVC preset covers for popular DJ software such as Deckadance, Traktor and CrossDJ are included
- 34 assignable backlit buttons allow you to control majority of the functions of different software.
- “Shift” & “HotCue” buttons to use in conjunction with the other buttons to assign more control functions.
- 11 assignable control encoders for controlling functions such as loop, EQ (hi, mid, low), song select, etc.
- Extremely compact and perfect match with MacBook™
- Class-compliant with Windows XP, Vista (32-bit), and Mac OS X
- USB bus-powered
- Firmware upgrade available simply via USB connection and iMap software.
- Available in black and white
- Different colors aluminum cover is available (optional)
- Custom laser-engraving service for aluminum cover is available at online purchase (optional)

Front Panel Layout

Note: Function operates slightly difference between DAWs. Please refer to your DAW manual for each function and overlap the provided labeling template according to your current using DAW. The following description is based on the functions that operate in Deckadance. Or you may assign your own MIDI mapping for using iDJX with other DAW. Refer to page.8 for “Assign the MIDI functions with “iMap™” software”

Tip: Please refer to the “Controls Chart” on P.11 for the control settings of other DAWs such as Traktor etc..



① 2 x high-sensitivity touch pad with backlight

Touch & move your finger to control the crosspoint (X/Y) of the Deckadance's “FX Control”.

② P. Hold buttons (TouchPad Hold)

Press this button to “Hold” the last touched crosspoint for the “FX Control”.

③ X/Y▲ & X/Y▼ buttons

Press these buttons to select the “Effect type”.

④ Loop encoders

Press to activate or deactivate the “Loop” function. Rotate clockwise to increase the “Leap length” and rotate counterclockwise to decrease.

⑤ Sel encoder (Select encoder)

Press to enlarge the song list page to full screen. Rotate to scroll through the song list.

⑥ A/B buttons

Press to import the selected song to the corresponding deck.

⑦ Bend < / > buttons

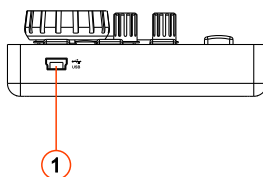
Activate the “Pitch/Search” left & right functions accordingly.

⑧ Jump </> buttons

Activate the “Jump 1 bar” backward & forward functions accordingly.

- ⑨ **Sync button**
Press this button to activate the Auto-Sync function of each desk at your software.
- ⑩ **Slave**
Activate the “Slave” function of the software.
- ⑪ **Transport buttons (CUE, Play/Pause)**
Press to activate the CUE, Play/Pause functions of each desk at your software.
- ⑫ **Hot Cue button**
While pressing & holding the hot cue button, press buttons 1,2,3 or 4 to create different hot cue points.
- ⑬ **Shift button**
While pressing & holding the shift button, press buttons 1,2,3 or 4 to delete the corresponding cue point.
- ⑭ **Mixer knobs (Hi, Mid, Bass & Gain)**
These adjust the channel balance, gain, the high-frequency, mid-range, low-frequency EQ settings of each desk at your software. Press to return the corresponding fader to centre value.
- ⑮ **Mixer control buttons (Treb, Mid & Bass)**
Press to switch the corresponding EQ On & Off.
- ⑯ **VST button**
Activate the VST function of the software.
- ⑰ **Monitor A/B buttons**
Activate the monitor A/B functions of the software.

Side Panel Layout



- ① **USB port (B-Type)**
Functions as a MIDI port to your notebook (or computer) and compatible software. Also provides power to your iDX.

Getting Started

Connecting your iDJX controller

① Connect the iDJX to your Mac/PC via the USB port

Choose a USB port on your Mac/PC and insert the wide (flat) end of the USB cable. Connect the cable's small jack end to the iDJX. Your Mac/PC should automatically “detect” the new hardware and notify you that it is ready to use.

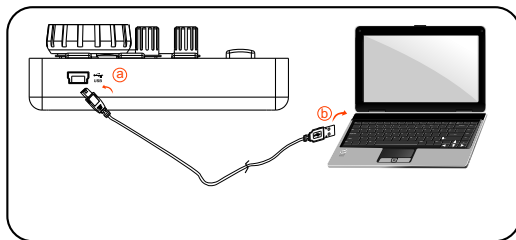


Diagram 1

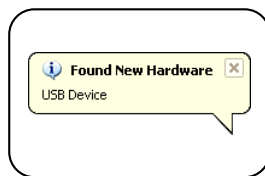


Diagram 2

② Assign the MIDI messages to iDJX

Refer to page.8 for “Assign the MIDI messages with “iMap™” software.

③ Setup your DJ software

Activate the ICON iDJX controller in your DAW or MIDI software using “MIDI setup” or “MIDI devices”.

(Note: Every application does this a little different, so refer to your software user manual for the settings.)

④ Import the preset template for the DJ software

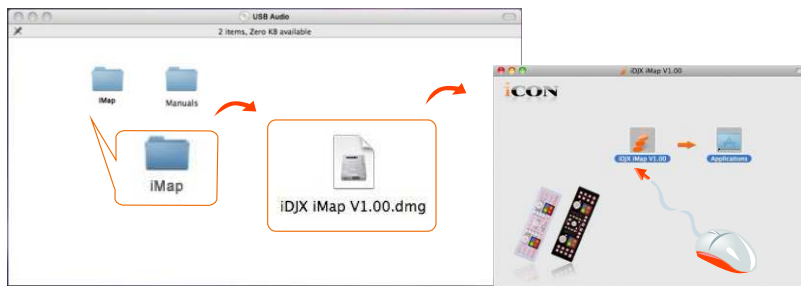
To avoid all hassles to set the midi mapping for your DJ software. We have created preset templates on some DJ software. By importing this template to your DJ software, your iDJX is ready to use immediately. These templates are stored on the CD with your package under the “Templates” folder. Also, we will update and create more templates for different DJ software. Please check our official website for updates.

(Note: You may reassign your midi mapping with the provided iMap™ software.)

Installing iMap™ Software for MAC OS X

Please follow the procedures below step-by-step to install your iMap™ software to Mac OS X

- ① **Insert the Utility CD in your CD-Rom and double click “iDJX iMap” icon.**



Tips: By “drag and drop” the “iDJX iMap” icon into the “Applications” folder, you could create a “iMap” shortcut on your Mac’s desktop.

Installing iMap™ Software for Windows

Please follow the procedures below step-by-step to install your iMap™ software.

- ① **Turn on your PC.**
- ② **Insert the Utility CD in your CD-Rom**

After you have inserted the CD into your CD-Rom, an installation screen should appear as shown in diagram 1; click “iMap™ installation”.

(Note: If the installation screen not appear automatically go to the CD folder and double click on “Setup”)



Diagram 1

- ③ **Setup Wizard appear**

Setup wizard appears, please click “Next”



Diagram 2

④ Choose Install Location

Choose your preferred install location for iMap™ or use the default location and click "Next"



Diagram 3

⑤ Select shortcut

Select the start menu folder in which you would like to create the iMap™ shortcut. Then click "Next"



Diagram 4

⑥ Create a shortcut on your desktop

Please untick the box if you do not want to place a shortcut icon on your desktop for iMap™, otherwise click "Next"

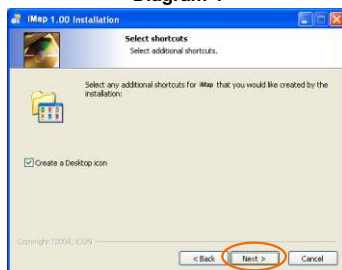


Diagram 5

⑦ iMap™ started to install

The iMap™ installation has now started, wait for it to finish. Then click "Finish"

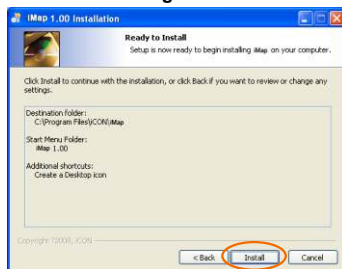


Diagram 6

⑧ Installation finished

Click "Finish" to complete the iMap™ software installation.

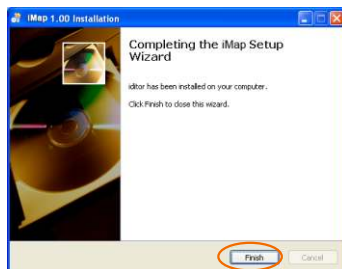
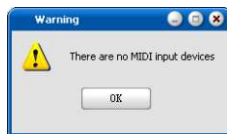


Diagram 7

Assigning MIDI functions with iMap™

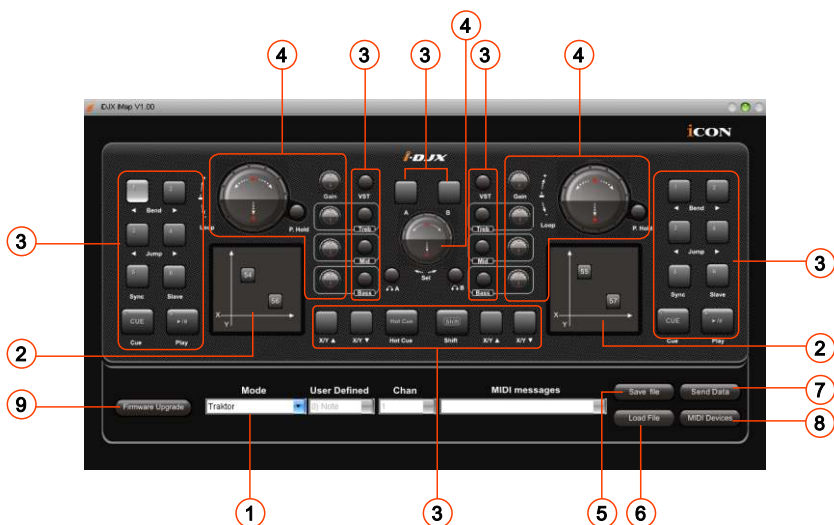
You can use iMap™ to assign the drum note easily for your iDJX.

Note: If your iDJX is not connected to your Mac/PC, the message "There are no MIDI input devices" will appear. Please connect iDJX to your Mac/PC with the provided USB cable.



iDJX

iMap™ iDJX software panel



① Mode selector

Select Deckadance, Traktor, CrossDJ mode according to your DAW or User Define mode for self midi assignment at the pull-down menu.

Tips: You may use iDJX as a controller for your music/recording software, thus the User Defined mode is useful for assigning your own midi mapping.

For the DJ software, it is much easier to import the supplied template than making your own midi mapping.

② Assign the MIDI channel & MIDI parameter to the A&B touch screen's X&Y axis.

Select your desired MIDI channel (1-16) and parameter such as CC , note & program value in the pull-down menu for each touch screen.

③ **Assign the MIDI channels and MIDI parameter to the control buttons**

There are 32 control buttons on iDJX you may assign. Select your desired MIDI channel (1-16) and MIDI parameter such as CC , note & program value in the pull-down menu for the control buttons.

④ **Assign the MIDI channels and MIDI parameter to the knobs**

There are 11 control knobs on iDJX you may assign. Select your desired MIDI channel (1-16) and MIDI parameter such as CC , note & program value for the knobs. There are two values that you can set for each knob as follows:

- 1). Rotate (Upper) – Setting the midi data for rotating the knob.
- 2). Enter (Lower) – Setting the midi data for pressing down (i.e. enter) the knob.

⑤ **“Save file” button**

Click this button to save your current settings for the iDJX. The file is an “.idx” file.

⑥ **“Load file” button**

Click this button to load a previously saved “. idx” setting file for your iDJX.

⑦ **“Send Data” button**

Click this button to upload the iMap™ software settings to your iDJX via USB connection.

(Note: You must have connected your iDJX to your Mac/PC, otherwise the settings upload will not be successful.)

⑧ **“MIDI Devices” button**

Click this button, a MIDI device select window will appear as shown in diagram1. Please select “ICON iDJX” for the MIDI Out Devices.



Diagram 1

⑨ **“Firmware Upgrade” button**

Click this button to enter into the firmware upgrade window for iDJX. Please refer to P.10 for the firmware upgrade procedure.

Firmware upgrade



Diagram 1

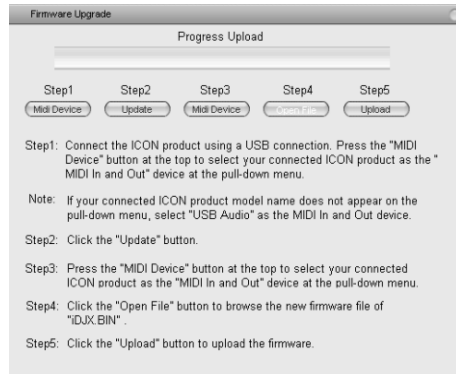


Diagram 2

Step 1: Connect the ICON product using a USB connection. Press the "MIDI Device" button at the top to select your connected ICON product as the "MIDI In and Out" device at the pull-down menu.

Note: *If your connected ICON product model name does not appear on the pull-down menu, select "USB Audio" as the MIDI In and Out device.*

Step 2: Click the "Update" button.

Step 3: Press the "MIDI Device" button at the top to select your connected ICON product as the "MIDI In and Out" device at the pull-down menu.

Step 4: Click the "Open File" button to browse the new firmware file.

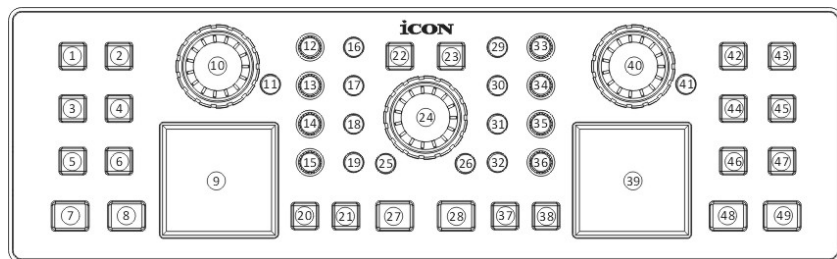
Step 5: Click the "Upload" button to upload the firmware.

Warning: *The firmware upload process "MUST" be completed and not be interrupted during the file uploading, otherwise the firmware may not be rewritten again.*

Restore the factory default settings

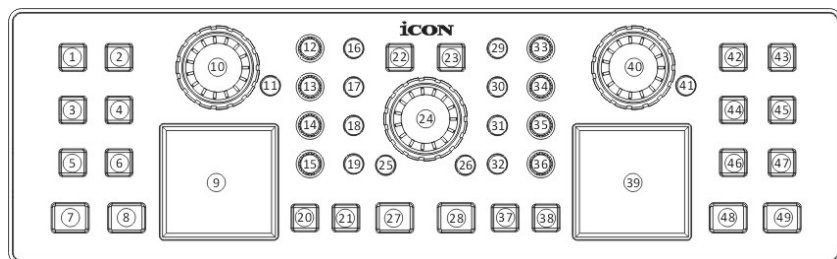
To restore your iDJX settings to factory default, simply import the "Factory Default" setting file into your iDJX with the original setting of the iMap software.

Deckadance Control Chart



Hardware control	Function description
1 / 42	Bend Left (Pitch/Search backward)
2 / 43	Bend Right (Pitch/Search forward)
3 / 44	Jump Left (Jump 1 bar backward)
4 / 45	Jump Right (Jump 1 bar forward)
5 / 46	Sync
6 / 47	Slave
7 / 48	Cue
8 / 49	Play
9 / 39	FX control
10 / 40	Press down: Activate or deactivate loop
	Rotate Clockwise for increase leap length / Rotate anticlockwise for decrease leap length
11 / 41	Pad Hold (Hold the last touched X/Y value of the touchpad)
12 / 33	Gain knob: Press to return the gain fader to centre position, rotate to adjust the gain value
13 / 34	Treb EQ knob : Press to return the treb fader to centre position, rotate to adjust the treb EQ value
14 / 35	Mid EQ knob : Press to return the mid fader to centre position, rotate to adjust the mid EQ value
15 / 36	Bass EQ knob : Press to return the bass fader to centre position, rotate to adjust the bass EQ value
16 / 29	VST
17 / 30	Treb EQ On/Off switches
18 / 31	Mid EQ On/Off switches
19 / 32	Bass EQ On/Off switches
20 / 37	X/Y ↑ – Select the "Effect type"
21 / 38	X/Y ↓ – Select the "Effect type"
22 / 23	A/B button - Import selected song for the A/B deck
24	Monitor A/B swithes
25 / 26	Monitor A/B swithes
27	Hot Cue - While pressing it, press button 1,2,3,4 (42,43,44,45) to create difference hot cue points
28	Hot Cue - While pressing it, press button 1,2,3,4 (42,43,44,45) to delete difference hot cue points

Traktor Control Chart



Hardware control	Function description
1 / 42	Loop IN
2 / 43	Loop OUT
3 / 44	Jog scratch backward
4 / 45	Jog scratch forward
5 / 46	Sync
6 / 47	Master
7 / 48	Cue
8 / 49	Play
9 / 39	Adjust the "Filter" knob value
10 / 40	Press down: Activate or deactivate a selected loop size Rotate to select loop size
11 / 41	Pad Hold (Hold the last touched "Filter" value of the touchpad)
12 / 33	Gain knob: Press to return the gain fader to centre position, rotate to adjust the gain value
13 / 34	Treb EQ knob : Press to return the treb fader to centre position, rotate to adjust the treb EQ value
14 / 35	Mid EQ knob : Press to return the mid fader to centre position, rotate to adjust the mid EQ value
15 / 36	Bass EQ knob : Press to return the bass fader to centre position, rotate to adjust the bass EQ value
16 / 29	Filetr On/Off switches
17 / 30	Treb EQ On/Off switches
18 / 31	Mid EQ On/Off switches
19 / 32	Bass EQ On/Off switches
20 / 37	Fx1 On/Off switches
21 / 38	Fx2 On/Off switches
22 / 23	A/B button - Import selected song for the A/B deck
24	Press down to enlarge the song list to full screen and rotate to select song
25 / 26	Monitor A/B switches
27	Hot Cue - While pressing it, press button 1 to 8 (42 to 49) to create difference hot cue points
28	Hot Cue - While pressing it, press button 1 to 8 (42 to 49) to delete difference hot cue points

Specifications

Connector:	USB connector (mini B type)
Power supply:	USB bus power
Current consumption:	100mA or less
Weight:	0.42kg (0.92lb)
Dimensions:	325(L) X 99(W) X 21(H) 12.78"(L) x 3.78"(W) x 0.83"(H)

Services

If your iDJX needs servicing, follow these instructions.

1. Ensure the problem is not related to operation error or external system devices.
2. Keep this owner's manual. We don't need it to repair the unit.
3. Pack the unit in its original packaging including end card and box. This is very important. If you have lost the packaging, please make sure you have packed the unit properly. ICON is not responsible for any damage that occurs due to non-factory packing.
4. Ship to the ICON tech support center or the local return authorization.

U.S. OFFICE:

ICON Digital Corporation
8001 Terrace Ave., Suite 201
Middleton, WI, 53562
USA

ASIA OFFICE:

ICON (Asia) Corp.
Unit 807-810, 8/F., Sunley Centre,
No. 9 Wing Yin Street, Kwai Chung, NT.,
Hong Kong.

5. For additional update information please visit our website at:
www.icon-global.com





iCON®
www.icon-global.com
info@icon-global.com

